



## Installing the Control Center

A “dual display driver” is needed when connecting a 2nd monitor (LCD projector/EIKI) to a computer. The ATI Catalyst driver\* is NOT in the basic image and must be installed manually after reimaging.

- Go to **START>My Computer>Instructional Share>Software>LCD>Video Display Drivers**

If you have a newer **Optiplex 980** computer (computer is mounted on a stand behind the monitor) double-click **Optiplex for 980 ONLY** and follow the prompts to install (Next, Install, Express, etc.)



OR

If your computer is any model other than the 980, double-click **Optiplex\_all models EXCEPT 980** and follow the prompts to install.

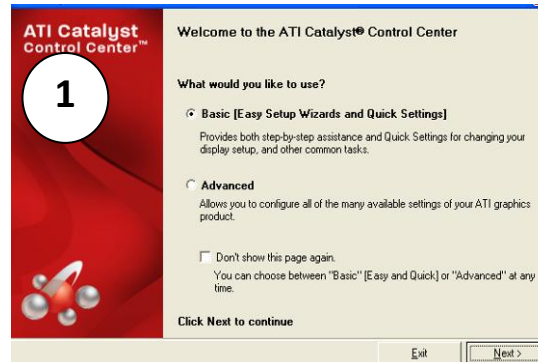
When prompted to restart, opt to do so later.

After installation, right-click on the desktop. Select **Catalyst Control Center**. The first time you launch Catalyst, you **may** get a message about running SmartGart first – just let it do its thing (takes 2-3 minutes). When the Control Center launches, if you don't see a screen like #1 (on right), click the **BASIC** button (lower left) and click YES when prompted to continue (otherwise proceed with steps 1-6).

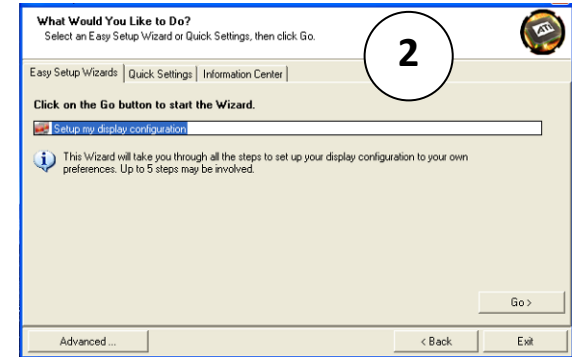
\* *Most Shen computers use Catalyst Control Ctr but some models may have a different driver. To check compatibility, right-click on the Desktop. Choose **Properties**→ **Settings**→ **Advanced**→ **Adapter**. In the Adapter Information section if it says anything with ATI or Radeon, Catalyst Control Center will work. If the chip type is Nvidia or some other type **DO NOT** install ATI Catalyst.*

## Using the Control Center...

Follow these steps to configure Control Ctr (should only have to configure once per user login):



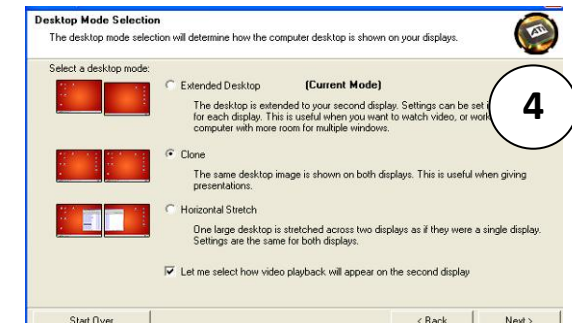
1) Just click **Next** (Basic/Easy Setup).



2) Click the **Go** button (NOT Exit).

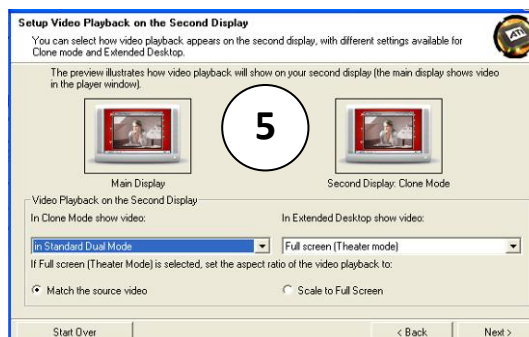


3) May sure a secondary display (Analog Monitor) is selected (follow above diagram).



4) Choose **CLONE** (unless you are an advanced user and are certain you prefer Extended Desktop\*\*). **Be sure to check the box “Let me select how video playback will appear...”** Click **Next**.

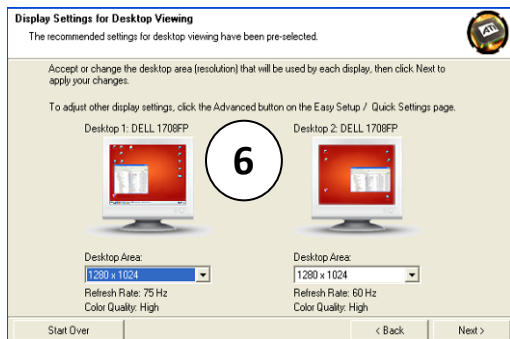
\*\*In Extended Desktop mode applications must be dragged to 2<sup>nd</sup> monitor).



5) Use left-most drop-down menu to choose “Same on both displays” or “Standard Dual Mode” (whichever is available). If Standard Dual Mode is selected, make sure “Match the source video” is selected. Click **Next**.

**Steps 6-7 Continued on Back...**

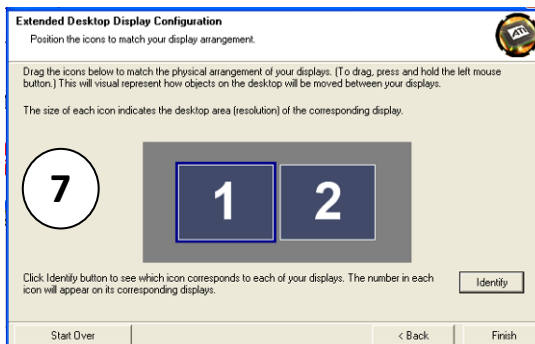
## ...Using the Control Center (continued)



- 6) In general, leave the resolution as-is. Click **Next > Finished > Exit**.

If at any time you would like to change your settings you can rerun this wizard.

**Note:** New *widescreen Optiplex 980* computers have a different aspect ratio than standard monitors which may cause a cloned image to appear "small." If you want the cloned (Eiki) image to appear larger, you must adjust the screen resolution separately when using an Eiki. Right-click on the Desktop. Select **Properties**. Click the **Settings** tab. Set the **Screen resolution** to 1280x960 (when not using an Eiki, the normal widescreen resolution is 1280x720 or 1280x768).



- 7) *Only applies to Extended Desktop users.* This determines whether your mouse moves to the right or left of your main screen to drag an application to the extended desktop. Use the Identify button if you are unsure which is the primary monitor. Click **Finished > Click Exit**.

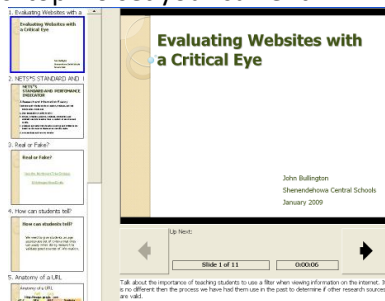
## Extended Desktop Mode

While in extended desktop mode various programs work differently.

**Media Player** – If you open a movie in Media Player on your main desktop in a small window it will automatically play full screen on your extended monitor desktop.

**Power DVD** – This works the same as Media Player. Running a DVD minimized on your main screen plays it full screen on your extended desktop.

**PowerPoint** – Ppt is perhaps the most useful program for extended desktop. To set your current presentation to run in extended desktop mode click the **Slide Show ribbon**. Select **Set Up Show**. Under Multiple Monitors, check the box for **Show Presenter View** and use the drop-down menu to select Secondary Monitor or Monitor 2. If these options are not present then you do not have the computer setup for extended desktop and/or do not have a 2<sup>nd</sup> monitor attached. In this mode, while your show is progressing on the LCD projector your notes and presentation tools are available to you on the main monitor.



## TV Tuner – Which One?

After re-imaging, you must reinstall TV tuner software to watch cable TV on your computer or projector. There are 3 different types of TV tuner cards, each with its own software. **First, determine which type of TV tuner is installed.** Look at the back of the computer. A black coaxial cable should be connected to a cable outlet on one end and the computer on the other).

- A. **Built-in TV Tuner card**– If the black coaxial cable is connected directly into the back of the computer, install **WinTV**

**USB TV Tuners:** If the black coaxial cable is attached to a USB device, check the brand on the USB device and install the corresponding software:

- B. **ATI TV Wonder** – Install **Catalyst Center** (different from Catalyst Control Center software described on this card)

**OR**

- C. **AVerMedia** – Install **AVerMedia Center**.

Install TV software: Go to **START > My Computer > Instructional Share > Software > LCD > TV**

Open the folder corresponding to your tuner type:

**ATI USB** – Open the **Install** folder, then the **XP** folder. Double-click the **RED Setup** icon.

**AVerMedia USB** – Open the **Media Center** folder. Double-click the **BLUE Setup** icon.

**WinTV** – Scroll down and double-click the **BLUE Setup** icon (last icon).

After installing and launching the TV software you should be prompted to "scan for channels." Be sure you scan for **cable** (not antenna) channels.